



# Transportation Solutions in the City of Rohnert Park

Infrastructure Investments Funded By Senate Bill 1 and Measure M



Essential funding for transportation programs and projects throughout Sonoma County is provided through SB 1 and Measure M. Measure M is expected to leverage external funds to deliver safety and congestion relief projects. **SB 1 alone will generate over \$8 million for road repairs and maintenance over the next 10 years for the City of Rohnert Park.** Together Measure M and SB1 can deliver results faster.

## FUNDING SOLUTIONS

### SENATE BILL 1 (SB 1)

In April 2017, Governor Jerry Brown signed into law **SB 1**, the Road Repair and Accountability Act of 2017. This landmark funding program increased the gas tax, diesel tax and vehicle registration fees to invest approximately \$5.4 billion annually in state and local roads, goods movement, public transit and active transportation programs. SB 1 will also put people to work. With every \$1 billion invested in transportation infrastructure, it supports approximately 13,000 jobs a year.

### ANNUAL STATEWIDE SB 1 FUNDING

- **\$1.5 Billion:** state highway operations protection program administered by Caltrans
- **\$400 Million:** state bridge maintenance and repairs
- **\$1.5 Billion:** local streets and roads
- **\$750 Million:** mass transit
- **\$300 Million:** goods movement and freight projects
- **\$250 Million:** congested corridors and relief management
- **\$200 Million:** the local partnership program to match locally generated transportation funds
- **\$100 Million:** Active Transportation Program

## ROAD REPAIRS ADVANCE IN THE CITY OF ROHNERT PARK

The City of Rohnert Park is delivering local streets and roads projects proposed in FY2018-19 funded by SB 1 and Measure M for maintenance, rehabilitation and safety.

- **Pavement management** will occur throughout the City with projects that will provide:
  - New pavement
  - Repairs to existing pavement
  - Restoration of curbs and gutters, offering a safer ride for both cyclists and motorists
- **Sidewalk repair and maintenance** includes upgrading pedestrian curbs ramps to meet federal accessibility standards to maximize safety.



## PROPOSITION 6 PUTS SB 1 FUNDING AT RISK IN THE COUNTY

The measure to repeal SB 1 through a constitutional amendment will be on the November 2018 ballot as Proposition 6. If successful, it proposition will:

- **Eliminate over \$15 million per year in road maintenance funds from city and county budgets.**
- **Eliminate all SB 1 funding designated for state highways**
- **Eliminate more than \$4 million per year in transit funds** in Sonoma County.
- Require any measure enacting specified taxes or fees on gas or diesel fuel, or on the privilege to operate a vehicle on public highways, to the electorate for approval.
- Potentially **lower future transportation tax revenues.**

**Sonoma County projects to improve highways, rail, goods movement, roads, bridges, trails and pedestrian safety could be delayed indefinitely with the elimination of SB 1 funding.**

**ACCOUNTABILITY AND TRANSPARENCY**

Strict accountability and transparency along with performance measures ensures safe and efficient delivery.

✓ **SB 1**

- Cities and counties must adopt and submit to the state a planned list of projects and year-end reporting that accounts for every dollar of SB 1 revenue received.
- SB 1 establishes an independent Inspector General appointed by the Governor to oversee programs to ensure all funds are spent as promised and reports annually.

**PROTECTION OF FUNDS**

The State and counties have long relied on “user fees,” fuel taxes and vehicle charges, to maintain transportation infrastructure. Diversion of those funds created a backlog of road and bridge repairs. Proposition 69, approved by the voters in June 2018, created a “lockbox” to ensure that all SB 1 funding is dedicated for transportation-related purposes only.

✓ **Proposition 69,**

- Prohibits the diversion of funds.
- Prohibits revenue from new vehicle license fees from being used to repay general obligation bond debt.
- Exempts new revenues from state and local spending limits.

**FUNDING AT RISK**

✓ **Proposition 6: SB 1 Repeal Effort**

If approved on the November 2018 ballot, it would:

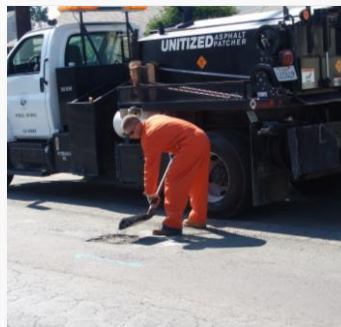
- Eliminate all SB 1 funding sources and reduce transportation funding statewide.
- Require legislation to submit any measure enacting specified taxes or fees on gas or diesel fuel, or on the privilege to operate a vehicle on public highways, to the electorate for approval.
- Potentially lower future transportation tax revenues.

**Transportation Projects At Risk**

SB 1 is a new revenue stream that supports projects currently funded by Measure M – a measure approved Sonoma County voters. Measure M is expected to leverage external funds to deliver multimodal projects and safety improvements. **SB 1 and Measure M combined can deliver projects faster. However, if Proposition 6 on the November ballot passes...**

**HIGHWAY AND BRIDGE SAFETY will be at risk with the County losing funding for projects on every highway to**

- ✓ Improve highway safety
- ✓ Repair and repave highways
- ✓ Repair bridges
- ✓ Reduce collisions
- ✓ Improve traveler information



**ROAD REPAIRS will be at risk and unsafe conditions, accidents and costly repairs could worsen because of reduced funding for:**

- ✓ Road repair
- ✓ Pothole Repair
- ✓ Safety modernization
- ✓ Signal modernization

**TRANSIT OPERATIONS AND MAINTENANCE will be at risk by reduced funding to:**

- ✓ Deliver expanded transit services
- ✓ Maintain transit vehicles
- ✓ Improve stations and cleanliness
- ✓ Support reliable services



**The County's GOODS MOVEMENT AND ECONOMIC ACTIVITY will be at risk on the highways that serve as the lifeblood of its economy. The County would lose funding for:**

- ✓ Delivery of roadway and rail safety improvements
- ✓ Installing smart technology to deliver goods more safely and efficiently
- ✓ Installing railroad crossing safety improvements in cities throughout Sonoma county
- ✓ Supporting local jobs