

## **Attachment C**

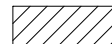
### **Typical Cross-Sections**



LEGEND



MOVEABLE MEDIAN BARRIER



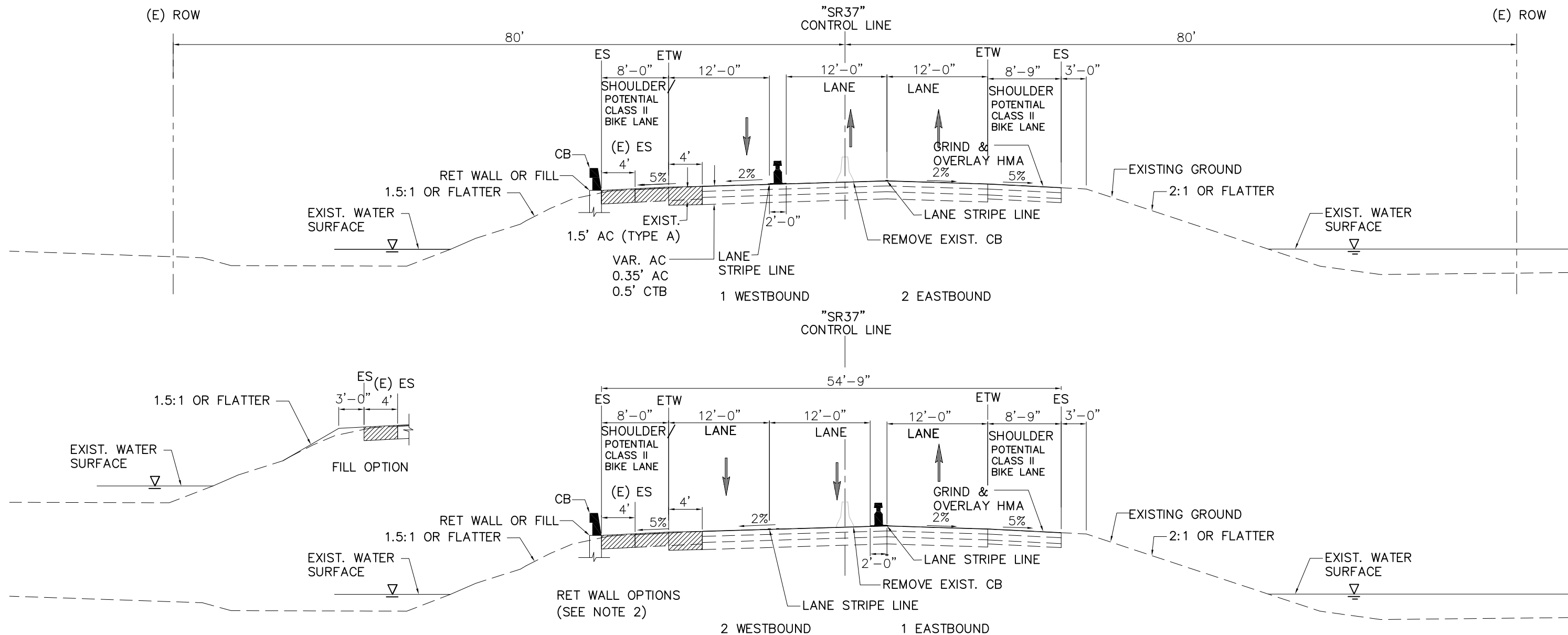
NEW/WIDENED PAVEMENT

ABBREVIATION

MMB MOVEABLE MEDIAN BARRIER

NOTES:

1. CROWN LOCATION VARIES FROM EB TO WB TO MEDIAN
2. EDGE OF SHOULDER OPTIONS
  - TYPE 5 RETAINING WALL
  - MECHANICALLY STABILIZED EMBANKMENT (MSE)
  - GEOGRID
  - TYPE 27SV BARRIER
  - SHEET PILING
  - FILL (NO BARRIER)



SR 37 SONOMA COUNTY PM 4.3 TO 5.9

TYPICAL SECTIONS - "SR37" LINE  
ALTERNATIVE I1

SCALE: NTS

Nov 21, 2018 - 9:41 am L:\Projects\MTC\60558874\_SR37\_DAA\900-CAD-905\910-CAD\20-SHEETS\TYPICAL SECTIONS Interim\_P10.dwg

**AECOM**

9/25/18

**PRELIMINARY  
NOT FOR CONSTRUCTION**

STATE ROUTE 37 IMPROVEMENTS

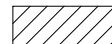
INTERIM  
TYPICAL CROSS SECTIONS  
ALTERNATIVE I1 - 3-LANE REVERSIBLE  
WITH MOVEABLE BARRIER, 12' LANES

SHEET NO.  
X-2

LEGEND



MOVEABLE MEDIAN BARRIER



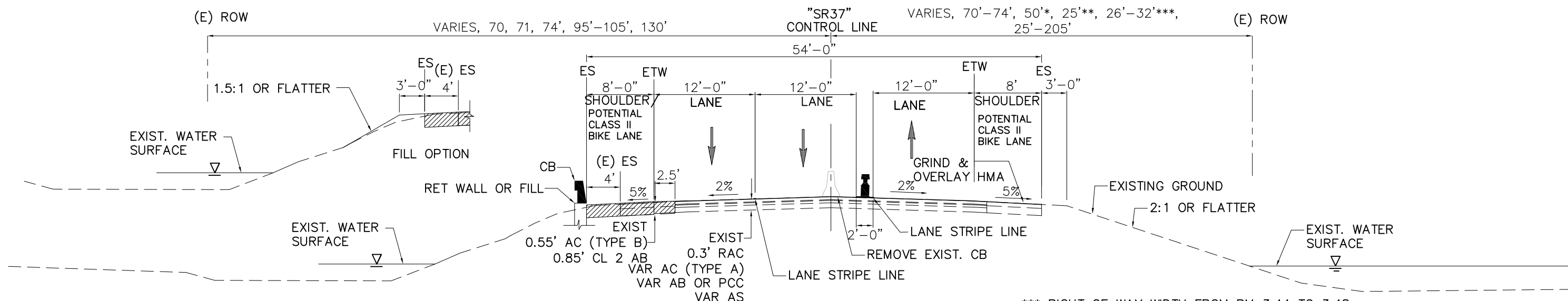
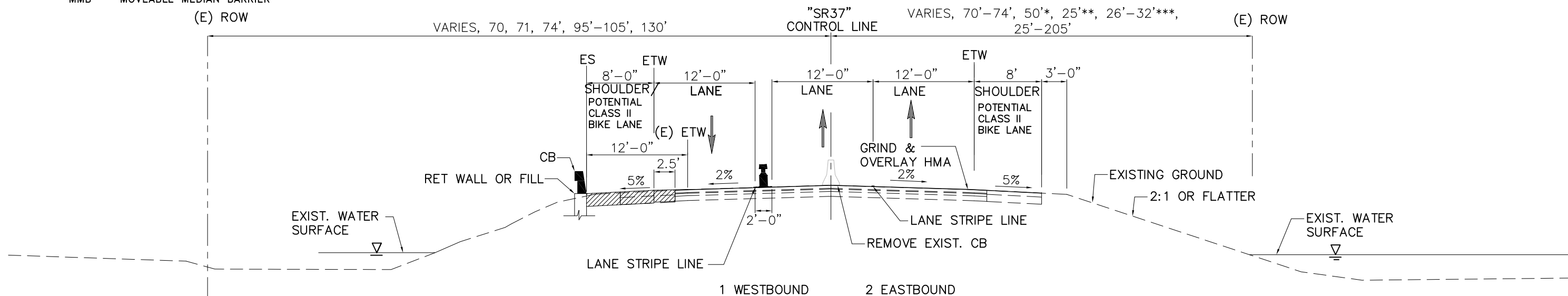
NEW/WIDENED PAVEMENT

ABBREVIATION

MMB MOVEABLE MEDIAN BARRIER

NOTES:

1. CROWN LOCATION VARIES FROM EB TO WB TO MEDIAN
2. EDGE OF SHOULDER OPTIONS
  - TYPE 5 RETAINING WALL
  - MECHANICALLY STABILIZED EMBANKMENT (MSE)
  - GEOGRID
  - TYPE 27SV BARRIER
  - SHEET PILING
  - FILL (NO BARRIER)



\*\*\* RIGHT OF WAY WIDTH FROM PM 3.44 TO 3.48  
 \*50' ROW WIDTH FROM PM 3.9 TO 5.6  
 \*\*25' ROW WIDTH FROM PM 5.6 TO 6.17


SR 37 SOLANO COUNTY PM 0.2 (SONOMA CR BRIDGE EAST ABUTMENT) TO 6.8 (JUST WEST OF MARE ISLAND I/C)

TYPICAL SECTIONS - "SR37" LINE  
 ALTERNATIVE 11

SCALE: NTS

Nov 21, 2018 - 9:42am L:\Projects\MTC\60558874\_SR37\_DAA\900-CAD-905\910-CAD\20-SHEETS\TYPICAL SECTIONS Interim\_P10.dwg

**LEGEND:**

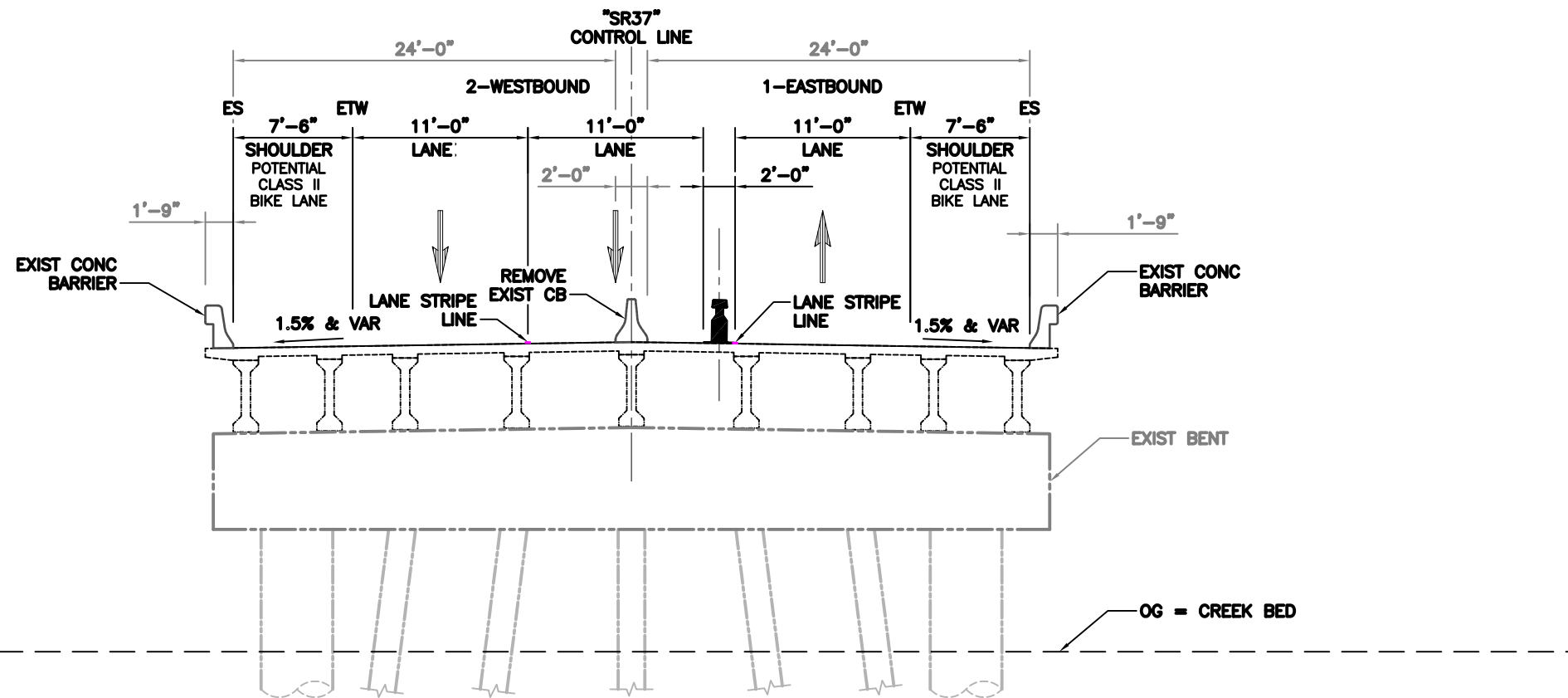
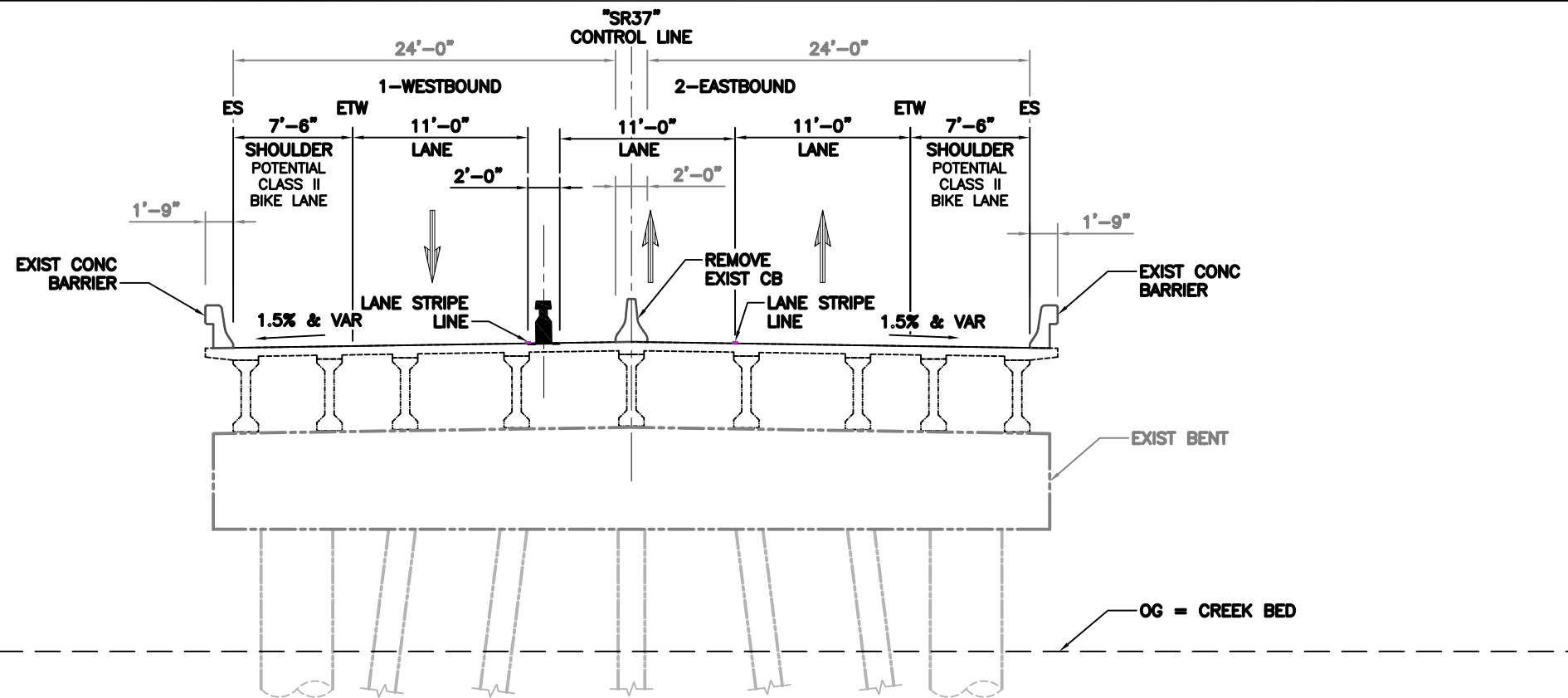
-  MOVEABLE MEDIAN BARRIER
-  TRAVEL WAY DIRECTION

**ABBREVIATION:**

- CB CONCRETE BARRIER
- EB EAST BOUND
- ES EDGE OF SHOULDER
- ETW EDGE OF TRAVEL WAY
- MMB MOVEABLE MEDIAN BARRIER
- OG ORIGINAL GROUND
- WB WEST BOUND

**NOTE:**

1. CROWN LOCATION VARIES FROM EB TO WB TO MEDIAN.
2. ROADWAY WIDTHS APPLY FOR ALTERNATIVE I1 V1 IF BRIDGE IS NOT WIDENED.



**TYPICAL SECTIONS - SONOMA CR. BRIDGE (BR. NO. 23-0063)  
ALTERNATIVE I1 - 11' LANES OPTION**

SCALE: NTS

Nov 21, 2018 - 9:57am - L:\Projects\MTC\60538974\_SR37\_DAM\900-CAD-905\910-CAD\20-SHEETS\TIP SEC Sonoma Br PID P14.dwg

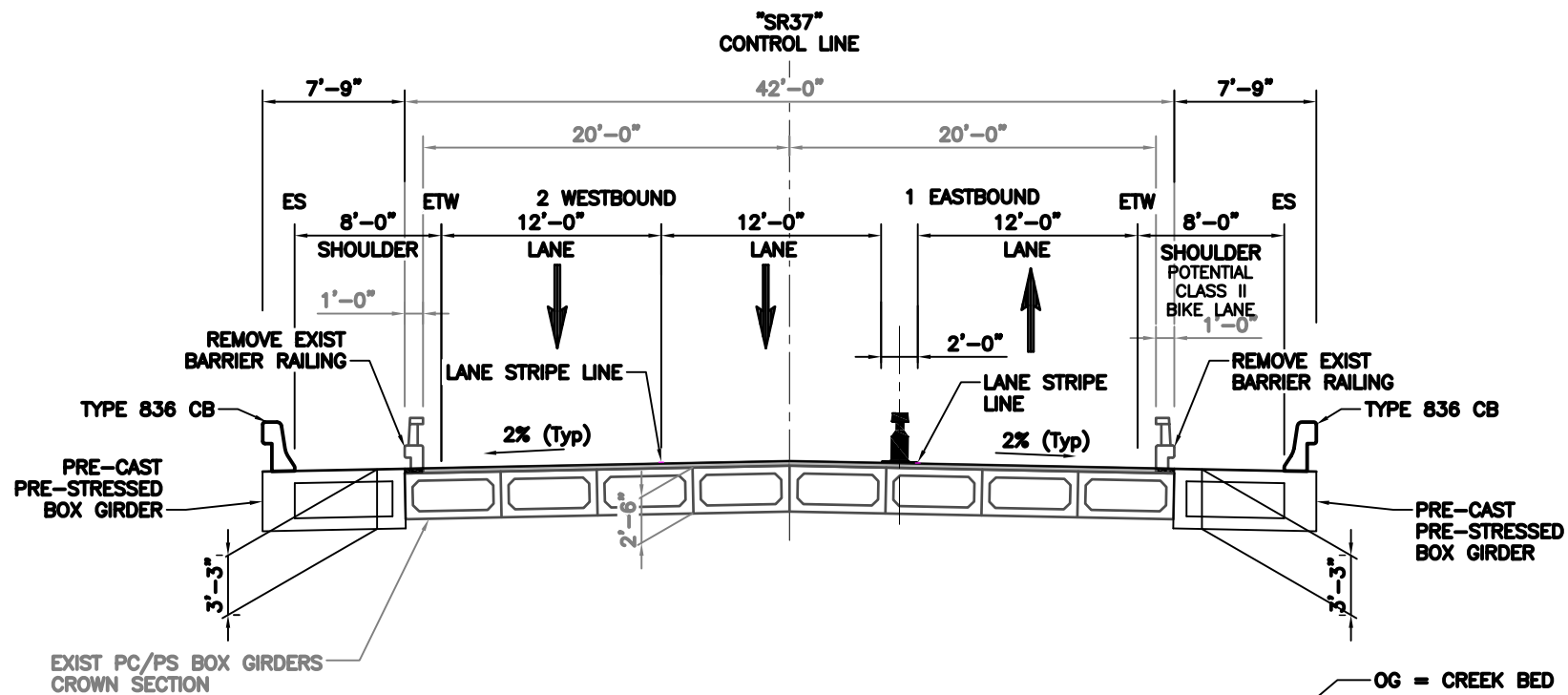
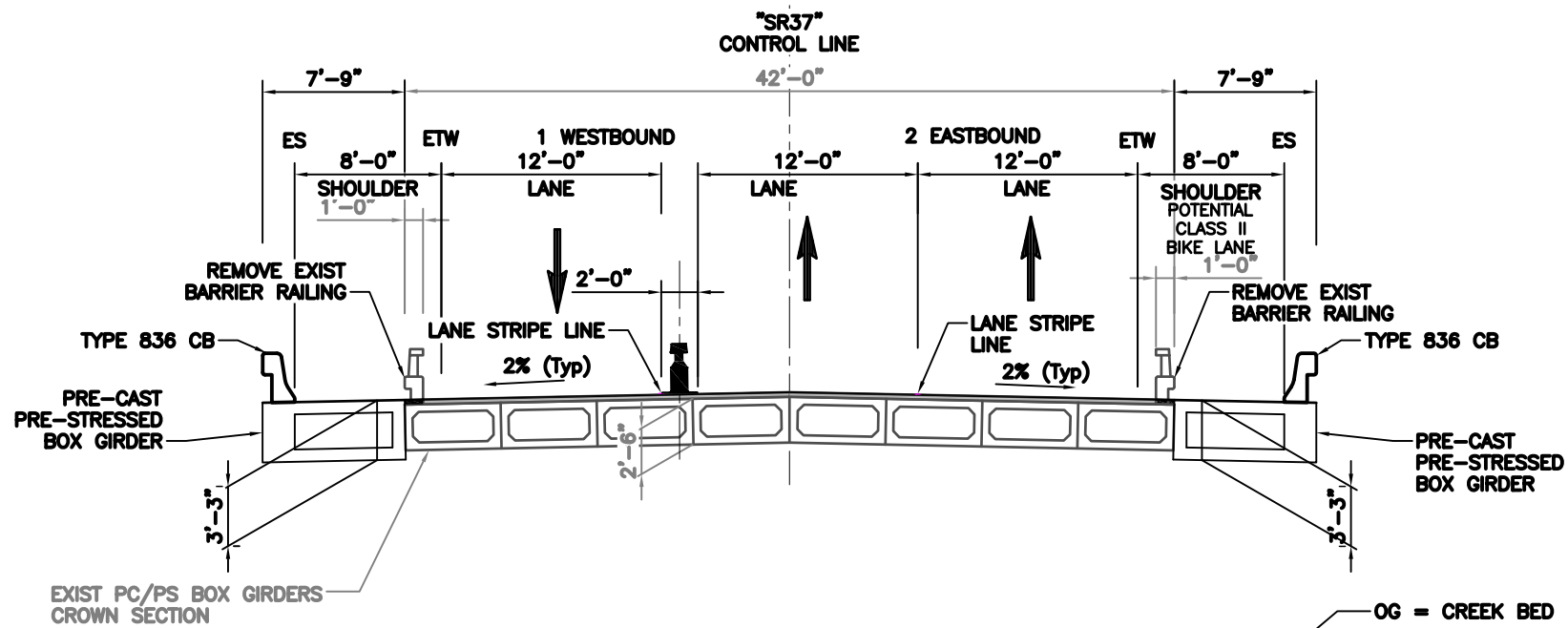
**AECOM**  
2018-11-21

**PRELIMINARY  
NOT FOR CONSTRUCTION**

STATE ROUTE 37 IMPROVEMENTS

INTERIM  
TYPICAL CROSS SECTIONS - SONOMA CREEK BRIDGE  
ALTERNATIVE I1 - 3-LANE REVERSIBLE  
WITH MMB, 11' LANES OPTION

SHEET NO.  
**X-4**



TYPICAL SECTIONS - "SR37" LINE  
TOLAY CREEK BRIDGE (BR. NO. 20-009)

SCALE: NTS

Nov 21, 2018 - 9:52am L:\Projects\MTC\60538974\_SR37\_DAM\900-CAD-05\910-CAD\20-SHEETS\TYP SEC Tolay Ck Brdg.dwg

**AECOM**  
2018-11-21

**PRELIMINARY  
NOT FOR CONSTRUCTION**

STATE ROUTE 37 IMPROVEMENTS

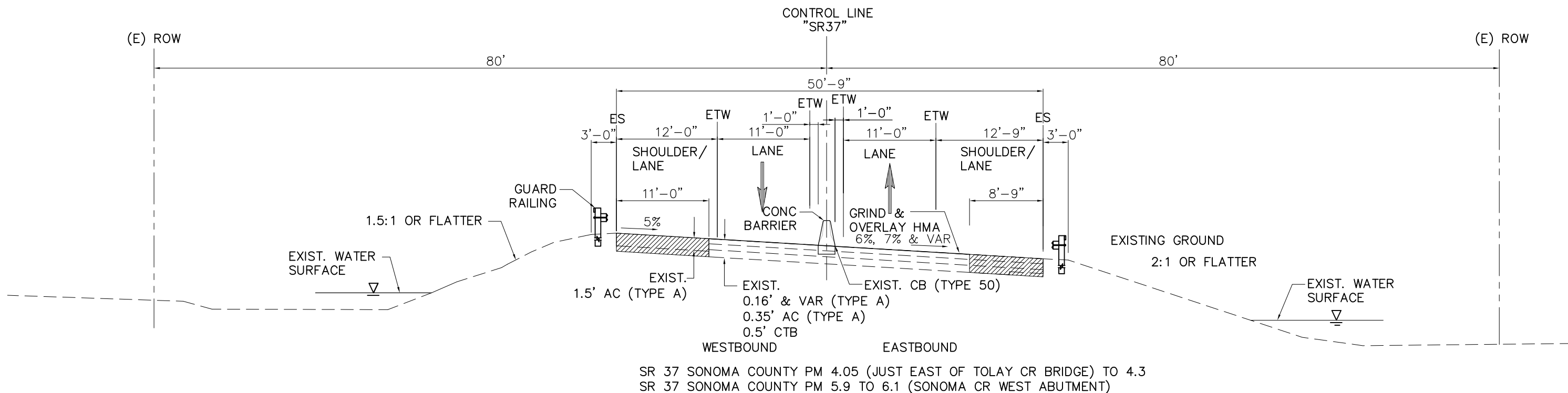
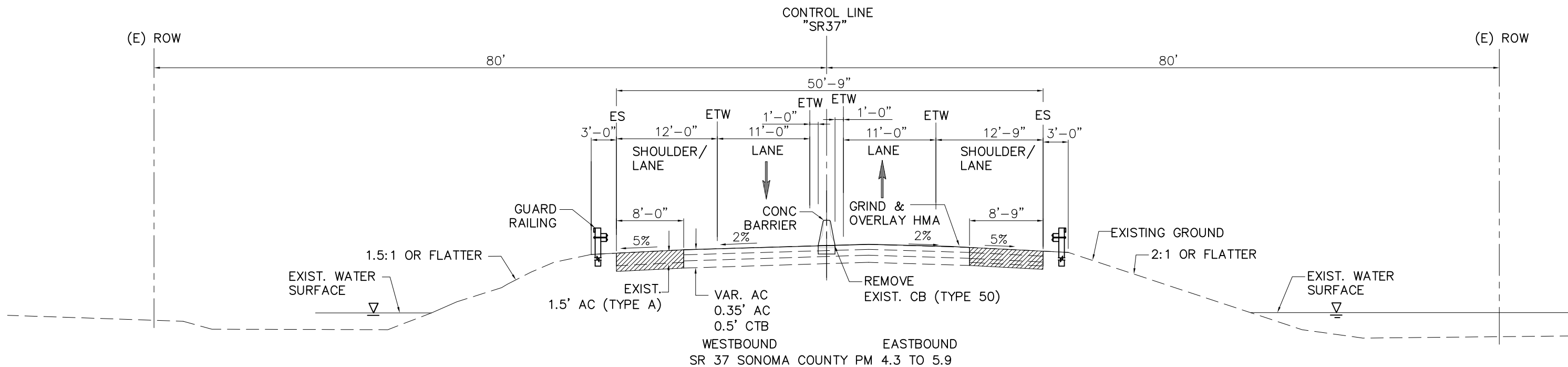
INTERIM  
TYPICAL SECTIONS - TOLAY CREEK BRIDGE  
ALTERNATIVE 11 - 3-LANE REVERSIBLE  
WITH MMB, 12' LANES

SHEET NO.  
**X-5**

LEGEND

 NEW/WIDENED PAVEMENT

NOTES:  
1. CROWN LOCATION VARIES FROM EB TO WB TO MEDIAN



TYPICAL SECTION - "SR37" LINE  
ALTERNATIVE 12

SCALE: NTS

Nov 21, 2018 - 9:44am L:\Projects\MTC\60538874\_SR37\_DAM\900-CAD-05\910-CAD\20-SHEETS\TYPICAL SECTIONS Interim\_P10.dwg

**AECOM**

9/25/18

**PRELIMINARY  
NOT FOR CONSTRUCTION**

STATE ROUTE 37 IMPROVEMENTS

INTERIM  
TYPICAL CROSS SECTIONS  
ALTERNATIVE 12- CONVERT SHOULDER TO TRAVEL LANE

SHEET NO.  
X-1

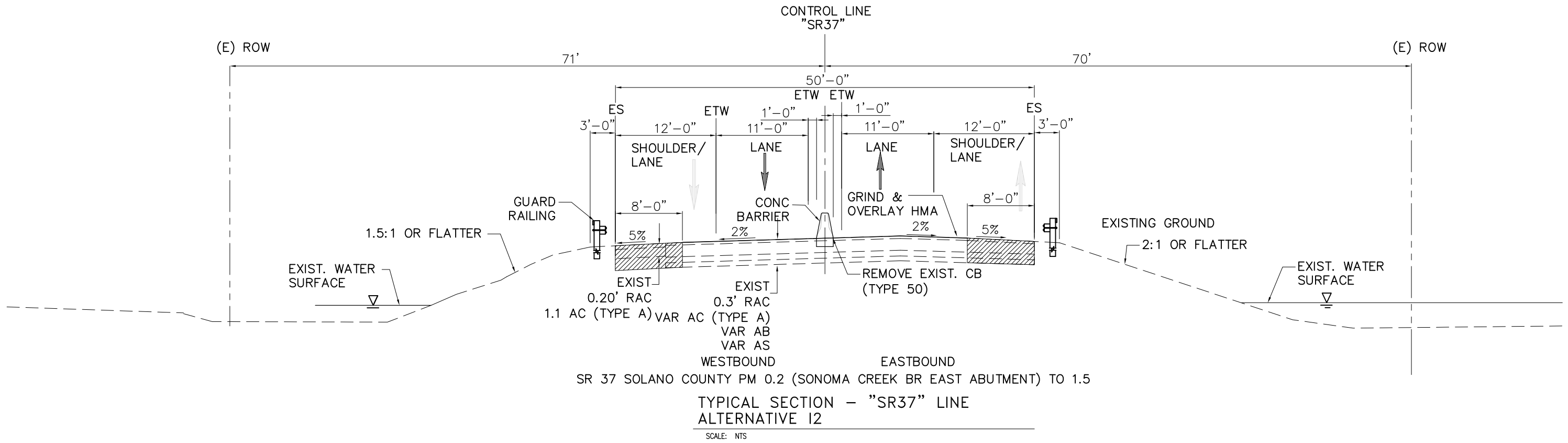
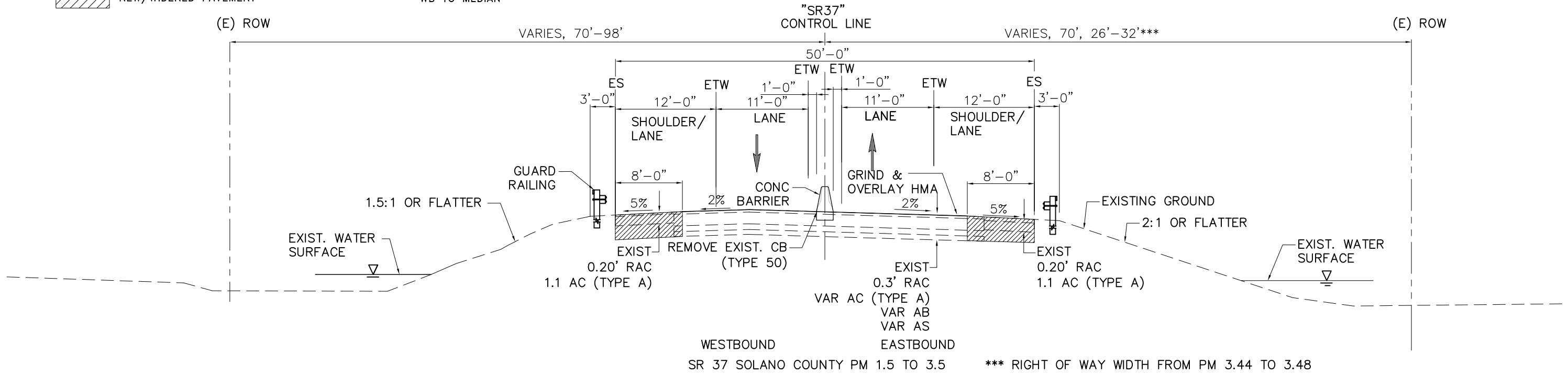
LEGEND



NEW/WIDENED PAVEMENT

NOTES:

- 1. CROWN LOCATION VARIES FROM EB TO WB TO MEDIAN



Nov 21, 2018 - 9:46am L:\Projects\MTC\60538974\_SR37\_DAA\900-CAD-05\910-CAD\20-SHEETS\TYPICAL SECTIONS Interim\_P10.dwg



9/25/18

**PRELIMINARY  
NOT FOR CONSTRUCTION**

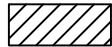
STATE ROUTE 37 IMPROVEMENTS

INTERIM  
TYPICAL CROSS SECTIONS  
ALTERNATIVE 12- CONVERT SHOULDER TO TRAVEL LANE

SHEET NO.  
X-2



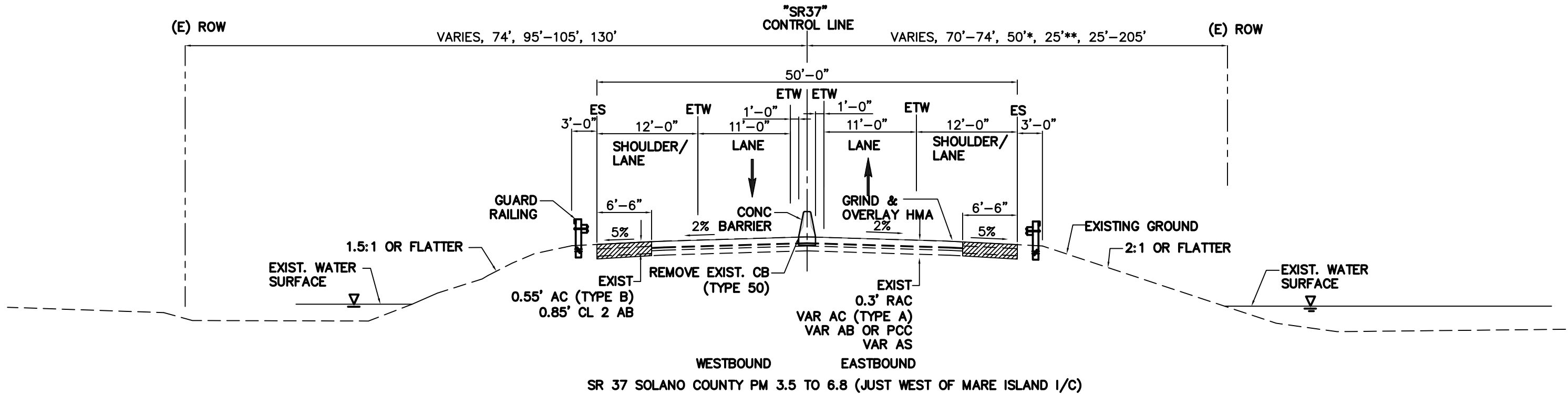
LEGEND



NEW/WIDENED PAVEMENT

NOTES:

1. CROWN LOCATION VARIES FROM EB TO WB TO MEDIAN



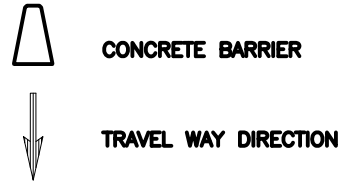
TYPICAL SECTION - "SR37" LINE  
ALTERNATIVE 12

SCALE: NTS

\*50' ROW WIDTH FROM PM 3.9 TO 5.6  
\*\*25' ROW WIDTH FROM PM 5.6 TO 6.17

Nov 21, 2018 - 9:49am L:\Projects\MTC\60558874\_SR37\_DAA\900-CAD-910-CAD\20-SHEETS\TYPICAL SECTIONS Interim\_P10.dwg

**LEGEND:**

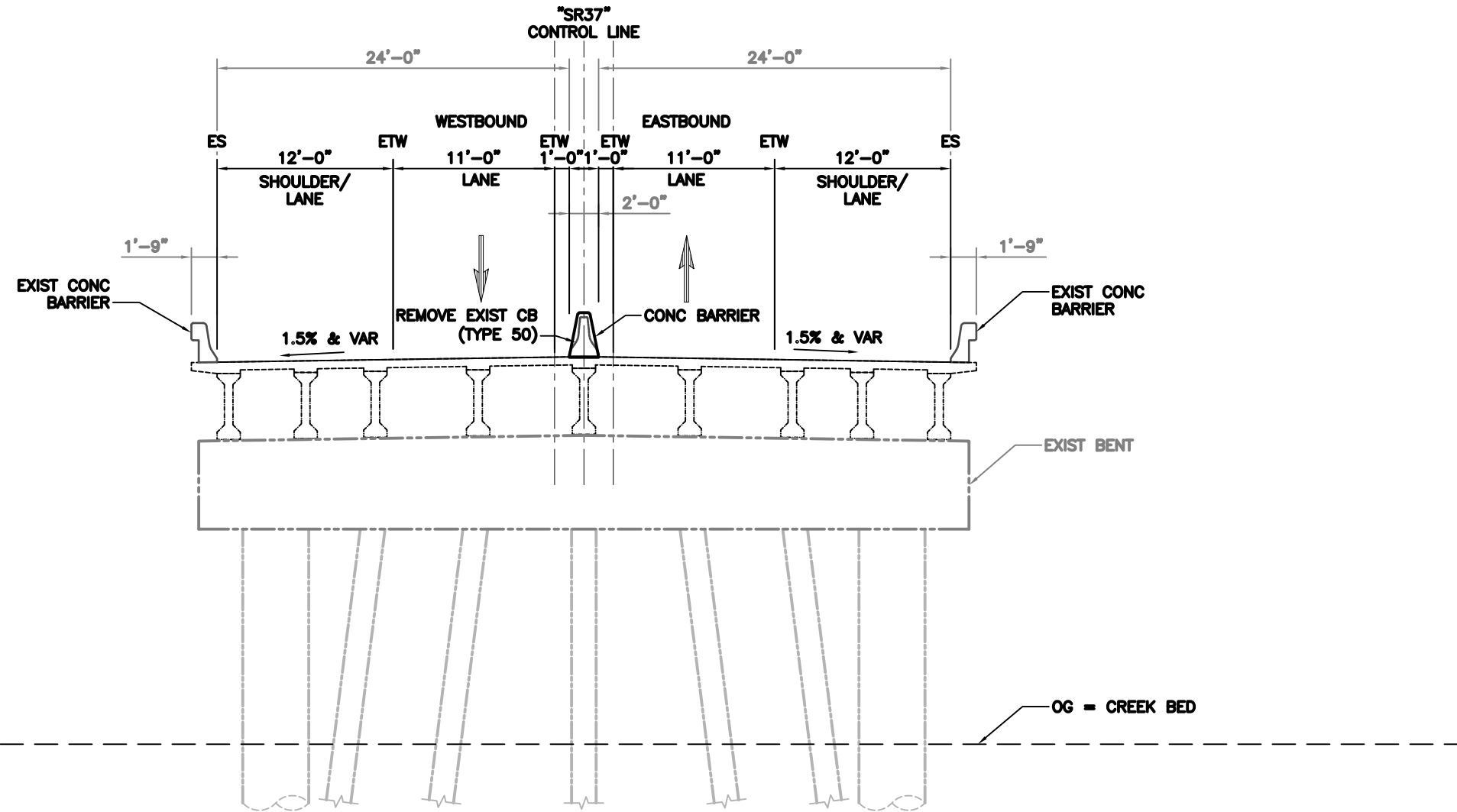


**ABBREVIATION:**

- CB CONCRETE BARRIER
- EB EAST BOUND
- ES EDGE OF SHOULDER
- ETW EDGE OF TRAVEL WAY
- OG ORIGINAL GROUND
- WB WEST BOUND

**NOTE:**

1. CROWN LOCATION VARIES FROM EB TO WB TO MEDIAN.

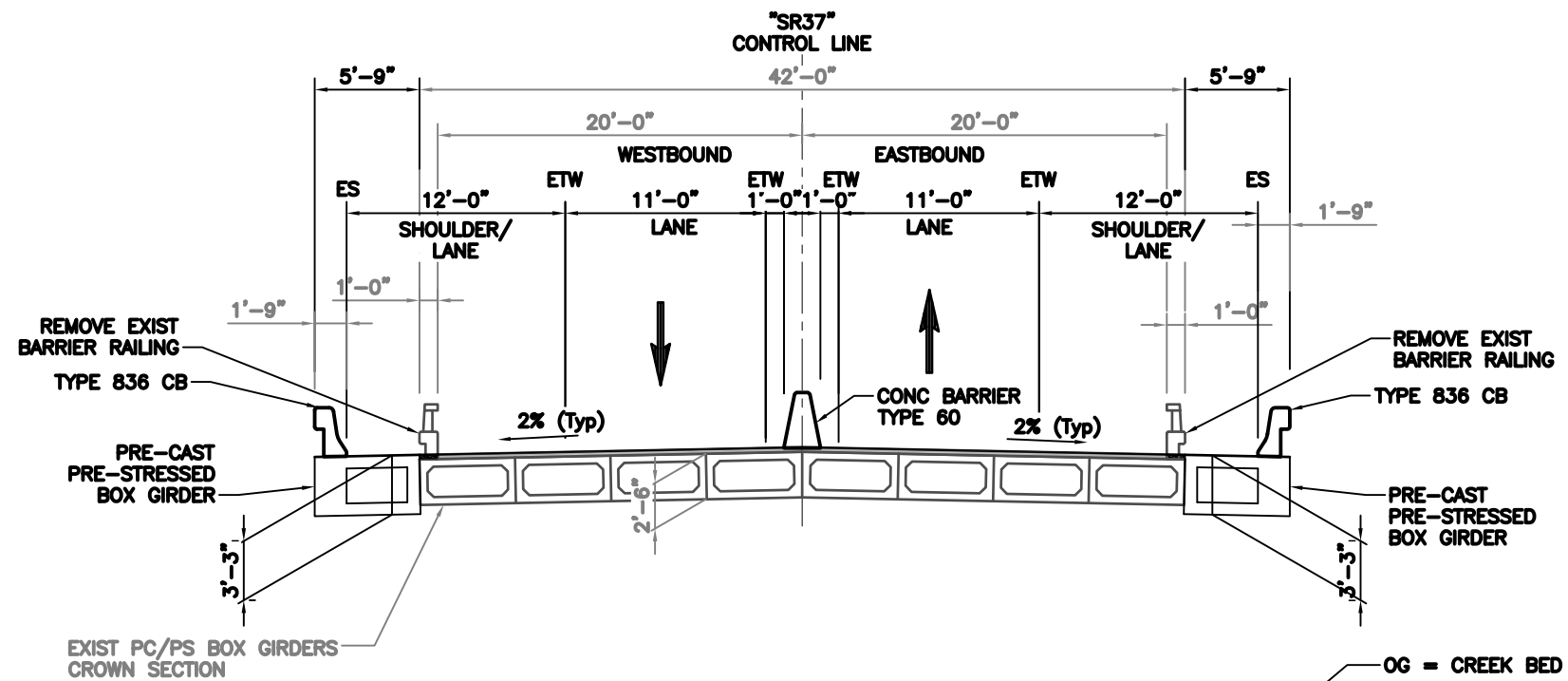


**TYPICAL SECTIONS - SONOMA CR. BRIDGE (BR. NO. 23-0063)  
ALTERNATIVE I2**

SCALE: 1" = 10'

Nov 21, 2018 - 9:57am L:\Projects\MTC\60538874\_SR37\_DAM\900-CAD-910-CAD\20-SHEETS\TIP SEC Sonoma Br PID P11.dwg

Nov 21, 2018 - 9:55am L:\Projects\MTC\60538974\_SR37\_DAM\900-CAD\20-SHEETS\TOP SEC TOLAY CRK BRIDGE



**TYPICAL SECTIONS - "SR37" LINE  
TOLAY CREEK BRIDGE (BR. NO. 20-009)**

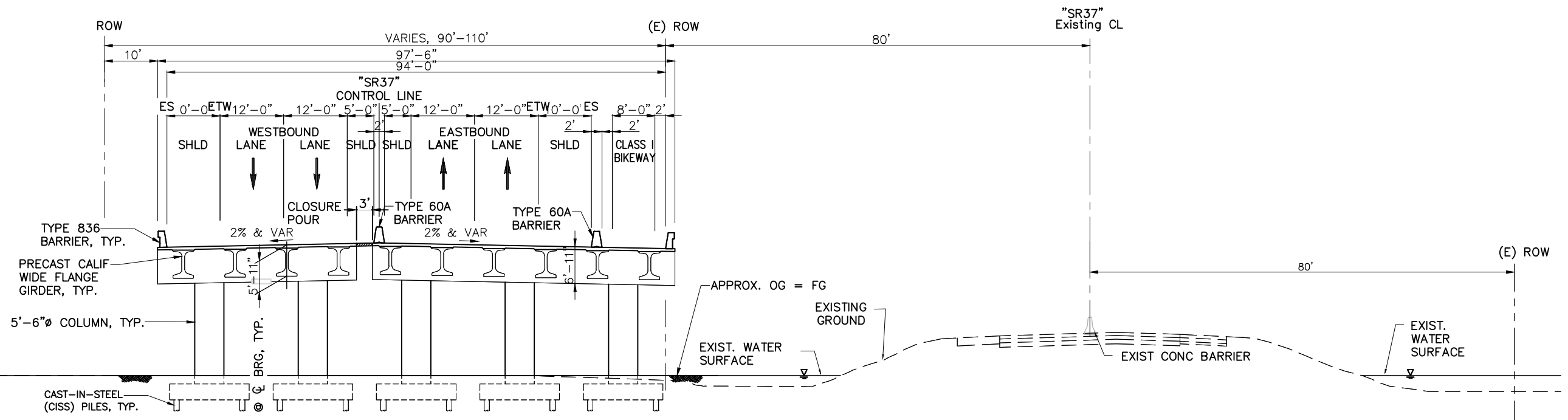
SCALE: NTS

ABBREVIATION

CB CONCRETE BARRIER  
 OG ORIGINAL GROUND  
 FG FINISHED GROUND

LEGEND

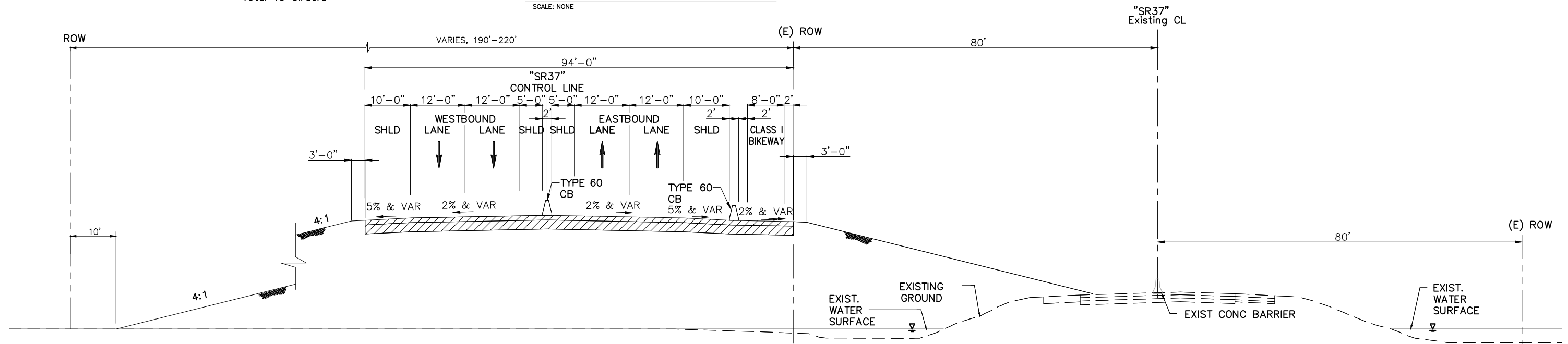
 NEW PAVEMENT



PRECAST CALIFORNIA WIDE FLANGE GIRDER  
 Span Length Assumed: 145'-0"  
 Total 5 Columns  
 Total 10 Girders

**TYPICAL SECTION (BRIDGE) - 'SR37' LINE**

SCALE: NONE



**TYPICAL SECTION (EMBANKMENT) - 'SR37' LINE**

SCALE: NONE

SR 37 SONOMA COUNTY PM 4.0 (JUST EAST OF TOLAY CREEK) TO 4.3  
 SR 37 SONOMA COUNTY PM 5.9 TO 6.1 (SONOMA CR BRIDGE WEST ABUTMENT)

Sep 26, 2018 10:59am L:\Projects\1703\60336874\_SR37\_DMA\900-CAD-615\910-CAD\20-SHEETS\TYPICAL SECTIONS\ultimate\02.dwg

**AECOM**

9/25/18

**PRELIMINARY  
 NOT FOR CONSTRUCTION**

**STATE ROUTE 37 IMPROVEMENTS**

ULTIMATE  
 TYPICAL CROSS SECTIONS  
 ALTERNATIVE U1/U2  
 ON EMBANKMENT OR BRIDGE STRUCTURE

SHEET NO.  
 X-1

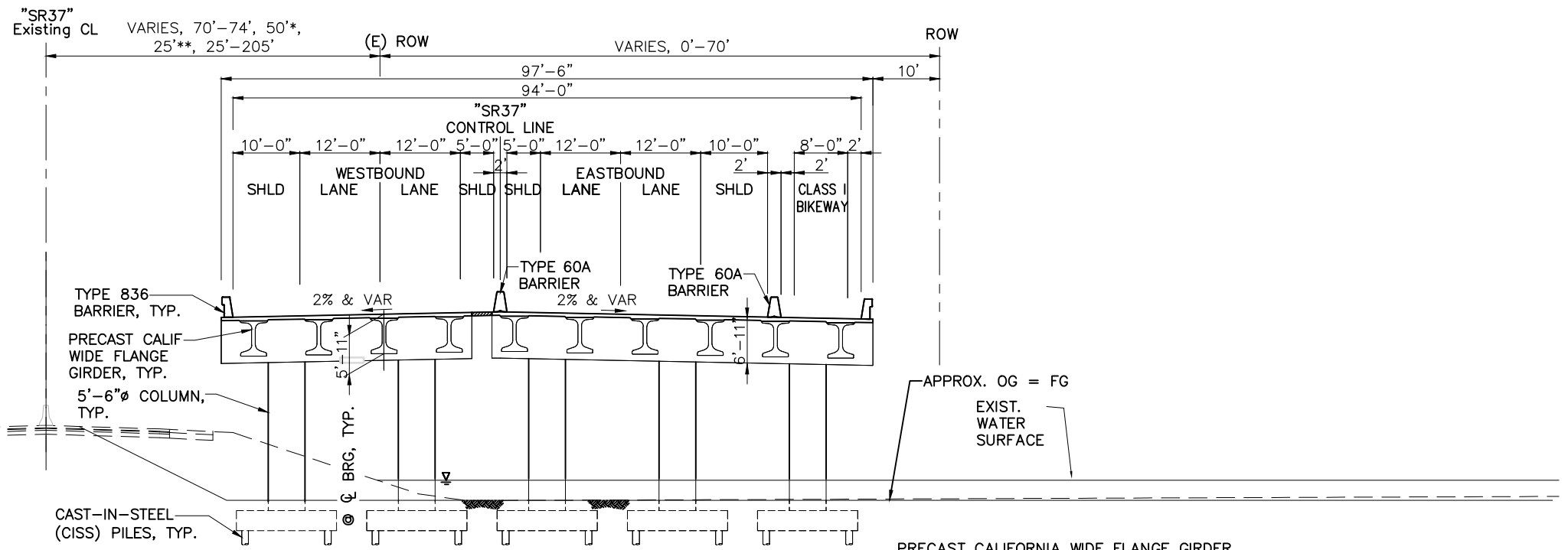


ABBREVIATION

CB CONCRETE BARRIER  
 OG ORIGINAL GROUND  
 FG FINISHED GROUND

LEGEND

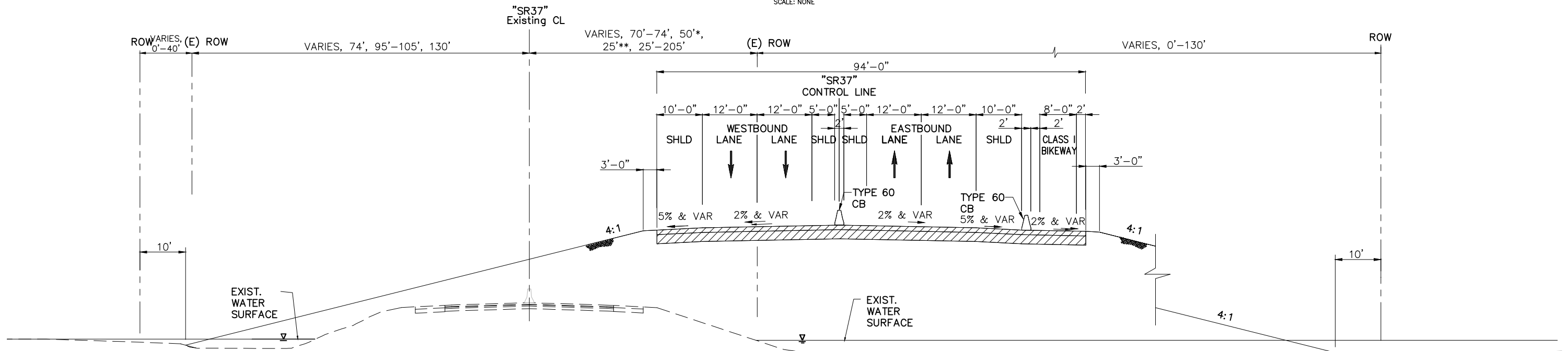
 NEW PAVEMENT



TYPICAL SECTION (BRIDGE) - 'SR37' LINE

SCALE: NONE

PRECAST CALIFORNIA WIDE FLANGE GIRDER  
 Span Length Assumed: 145'-0"  
 Total 5 Columns  
 Total 10 Girders



TYPICAL SECTION (EMBANKMENT) - 'SR37' LINE

SCALE: NONE

SR 37 SOLANO COUNTY PM 2.2 TO 7.4 (NAPA RIVER BRIDGE ABUTMENT)

\*50' ROW WIDTH FROM PM 3.9 TO 5.6  
 \*\*25' ROW WIDTH FROM PM 5.6 TO 6.17

L:\Projects\WCS\60336874\_SR37\_DMA\900-CAD-615\910-CAD\20-SHEETS\TYPICAL SECTIONS\ultimate\02.dwg  
 Sep 26, 2018 10:54am willfrancesj

**AECOM**

9/25/18

PRELIMINARY  
 NOT FOR CONSTRUCTION

STATE ROUTE 37 IMPROVEMENTS

ULTIMATE  
 TYPICAL CROSS SECTIONS  
 ALTERNATIVE U1/U2  
 ON EMBANKMENT OR BRIDGE STRUCTURE

SHEET NO.  
 X-3