



Solano SR37 Public Access Plan

Allan Calder, County of Solano

Nicole Byrd Braddock, Solano Land Trust

PARTNERS:

- City of Vallejo
- County of Solano Resource Management (Planning Division)
- County of Solano Parks and Recreation Department
- Bay Area Ridge Trail
- Greater Vallejo Recreation District
- Napa Valley Vine Trail
- Solano Land Trust
- Solano Resource Conservation District
- Solano Transportation Authority
- San Francisco Bay Trail
- San Francisco Bay Area Water Trail
- Vallejo Flood and Wastewater District





PROPOSED PUBLIC ACCESS PROJECTS:

1. Cullinan Ranch
2. Guadalupe Village – *Potential Water Trail Site*
3. North Mare Island Launch - *Potential Water Trail Site*
4. Pier Launch North of Mare Island Causeway - *Potential Water Trail Site*
5. Informal Launch Site on Wilson Ave - *Potential Water Trail Site*
6. Vallejo Marina - *Potential Water Trail Site*
7. South of the Ferry Terminal - *Potential Water Trail Site*
8. Launch Site near CalMaritime - *Potential Water Trail Site*
9. Bay Trail-Vine Trail Improvements and New Public Viewing Sites
10. White Slough
11. Hudeman Slough Boat Ramp and Bay Trail Connection
12. Mare Island Trail Segments and Interpretive Center
13. Mare Island Strait Historic Trail



1 Cullinan Ranch

- Amenities include: kayak and boat launch, observation area, and interpretive panels
- Enhance Parking Lot & Portable Restroom



2 Guadacanal Village

- Enhance observation area, parking lot, and interpretive panels
- Improve bike/ped trail
- Non-ADA compliant pedestrian stairs

4 Pier North of Mare Island Causeway



5 Informal Launch Site On Wilson Avenue



7 San Francisco Bay Ferry



6 Vallejo Marina





9 Bay-Trail Vine Trail Improvements



- 12 identified gaps between the Vallejo Ferry and the Napa County border.
- Funding shortfall exists across all segments

New Public Viewing Sites



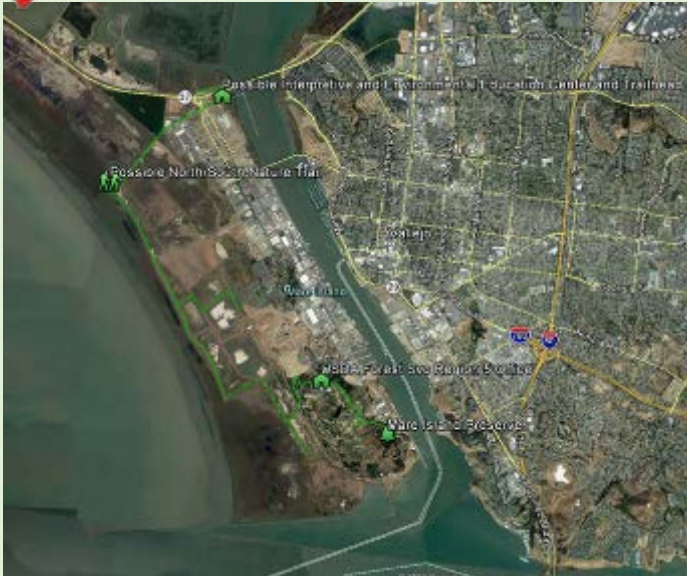
- Public viewing area along Wilson Avenue Curve
- Vine Trail shelter at "Mile Marker 0" at the Vallejo Ferry

10 White Slough



- Staging areas, observation areas, and trails in South White Slough
- Existing Bay/Vine Trail path along SR-37 in the White Slough area is in need of upgrades and maintenance

12 Mare Island



- Establish Interpretive and Education Center that can provide potential non-motorized vessel rentals, public tour programming, and education opportunities
- Establish a trailhead which could accommodate parking with bussing connectivity options



EDUCATION PARTNERS:

- Cal Maritime
- Touro University
- Solano Community College
- Solano County Office of Education
- Solano Land Trust
- Solano Resource Conservation District



Questions?

Contact:

Allan Calder, County of Solano
AMCalder@SolanoCounty.com
(707) 784-3159

Nicole Byrd Braddock, Solano Land Trust
nicole@solanolandtrust.org
(707) 709-9021

