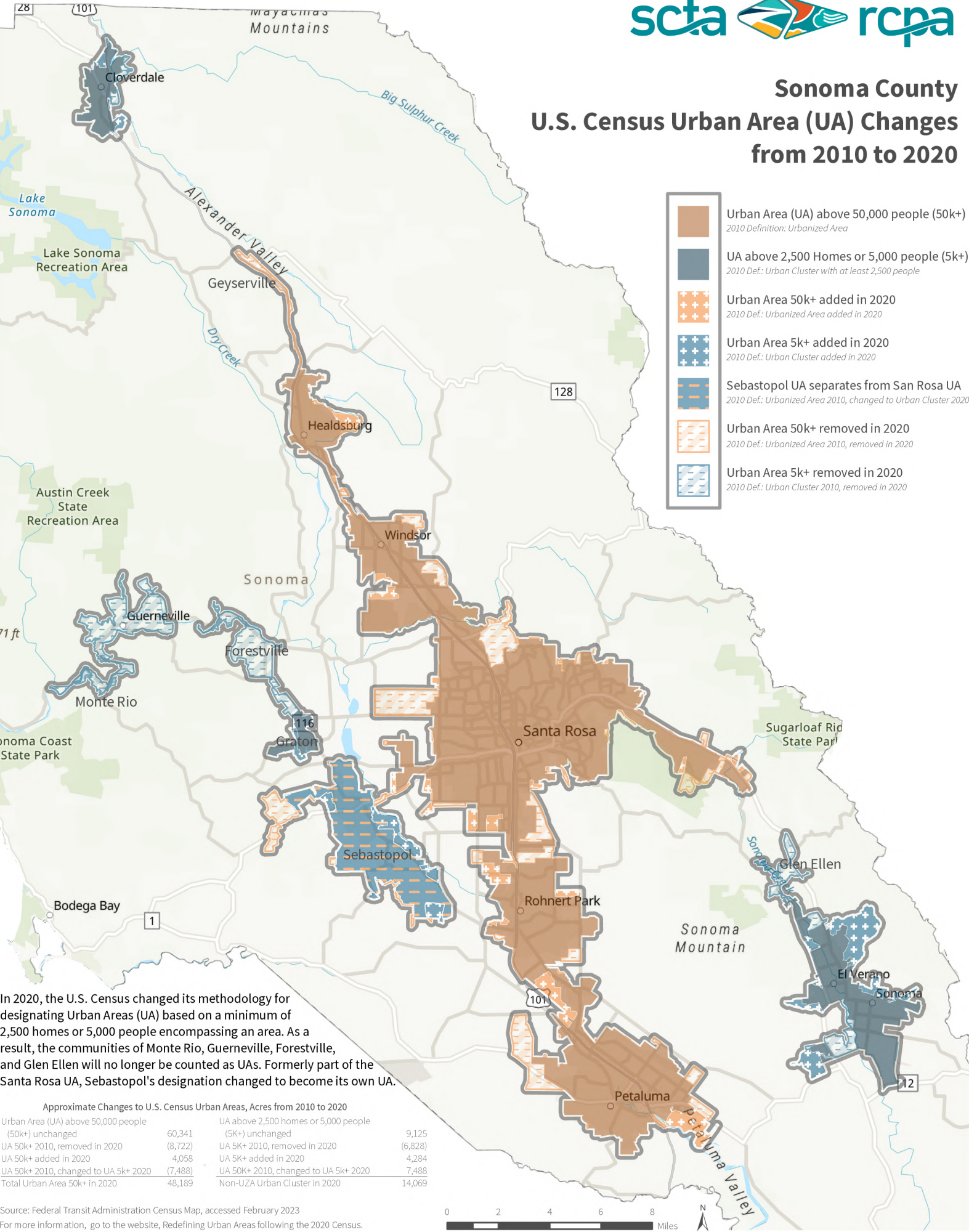


Sonoma County U.S. Census Urban Area (UA) Changes from 2010 to 2020



- Urban Area (UA) above 50,000 people (50k+)
2010 Definition: Urbanized Area
- UA above 2,500 Homes or 5,000 people (5k+)
2010 Def: Urban Cluster with at least 2,500 people
- Urban Area 50k+ added in 2020
2010 Def: Urbanized Area added in 2020
- Urban Area 5k+ added in 2020
2010 Def: Urban Cluster added in 2020
- Sebastopol UA separates from San Rosa UA
2010 Def: Urbanized Area 2010, changed to Urban Cluster 2020
- Urban Area 50k+ removed in 2020
2010 Def: Urbanized Area 2010, removed in 2020
- Urban Area 5k+ removed in 2020
2010 Def: Urban Cluster 2010, removed in 2020

In 2020, the U.S. Census changed its methodology for designating Urban Areas (UA) based on a minimum of 2,500 homes or 5,000 people encompassing an area. As a result, the communities of Monte Rio, Guerneville, Forestville, and Glen Ellen will no longer be counted as UAs. Formerly part of the Santa Rosa UA, Sebastopol's designation changed to become its own UA.

Approximate Changes to U.S. Census Urban Areas, Acres from 2010 to 2020

Urban Area (UA) above 50,000 people (50k+) unchanged	60,341	UA above 2,500 homes or 5,000 people (5k+) unchanged	9,125
UA 50k+ 2010, removed in 2020	(8,722)	UA 5k+ 2010, removed in 2020	(6,828)
UA 50k+ added in 2020	4,058	UA 5k+ added in 2020	4,284
UA 50k+ 2010, changed to UA 5k+ 2020	(7,488)	UA 50k+ 2010, changed to UA 5k+ 2020	7,488
Total Urban Area 50k+ in 2020	48,189	Non-UZA Urban Cluster in 2020	14,069

Source: Federal Transit Administration Census Map, accessed February 2023
For more information, go to the website, Redefining Urban Areas following the 2020 Census.

