

COPELAND CREEK TRAIL

PROJECT SPONSORS

City of Rohnert Park

PROJECT FACT SHEET

EXPENDITURE PLAN DESCRIPTION

Make existing path along Copeland Creek and Laguna de Santa Rosa from Redwood to Hinebaugh Creek (at Rohnert Park Expressway), and Commerce Blvd to the eastern city limits useable for pedestrians and bicyclists.

MEASURE M PROGRAMMING CAPACITY

Rohnert Park has programmed all \$350K in Measure M – BP funds identified in the Measure M Expenditure Plan.

STAKEHOLDERS

City of Rohnert Park

PROJECT DETAILS

The Copeland Creek Bike Trail project is a 1.2-mile paved Class I bike path along Copeland Creek west of Highway 101, between Redwood Drive and Rohnert Park Expressway, and between Commerce Boulevard and the eastern city limits in Rohnert Park.

PHASE 1

Phase 1 included asphalt paving at the existing Sonoma County Water Agency service road along the north side of the creek and rehabilitation of an existing Class I path in a second location. The path is now suitable for bicycles and a wide range of pedestrian uses, including wheelchairs, strollers, skateboards and walkers.

PROJECT STATUS/SCHEDULE

Phase 1 was constructed in summer of 2008. The Notice of Completion was filed on November 25, 2008. The trail/path is open for use.

PHASE 2

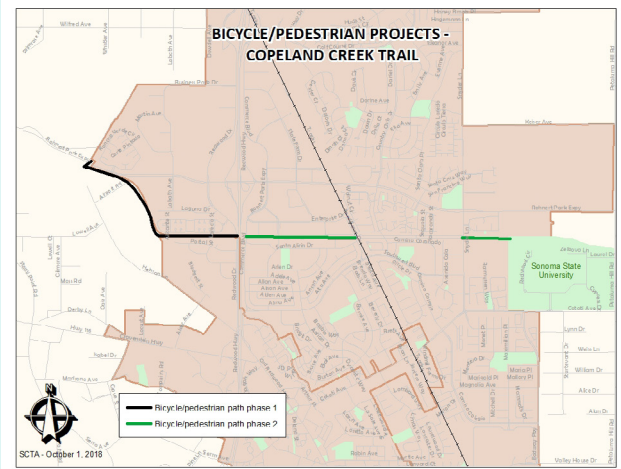
The second phase of the Copeland Creek Trail project reconstructed 4650 LF of the most deteriorated sections of the most well-used bicycle and pedestrian path in Rohnert Park, including sections adjacent to senior housing and multi-family housing, and most notably along the high school and up to Sonoma State University. The funding was used as matching funds for Transportation Enhancement funding. The City expended the funds in the Design phase and was able to leverage that funding for federal Transportation Enhancement and local funds for construction.

PROJECT STATUS/SCHEDULE

Phase 2 was completed in November 2012. The trail/path is open for use.

Funding (in thousands):

| Phase | TOTAL | MEASURE M – BP | OTHER | NEED |
|---------------|----------------|----------------|--------------|------------|
| 1 | \$300 | \$300 | \$0 | \$0 |
| 2 | \$960 | \$50 | \$910 | \$0 |
| TOTALS | \$1,260 | \$350 | \$910 | \$0 |



[CLICK THE MAP ABOVE TO VIEW A LARGER VERSION.](#)



SONOMA COUNTY TRANSPORTATION AUTHORITY
 411 KING STREET SANTA ROSA, CA 95404
 T. 707.565.5373 E. INFO@SCTA.CA.GOV