

BIKE LANES OLD REDWOOD HIGHWAY – MENDOCINO AVE. – SANTA ROSA AVE.

PROJECT SPONSORS

City of Santa Rosa

PROJECT FACT SHEET

EXPENDITURE PLAN DESCRIPTION

Create a safer north-south bike route through central Santa Rosa.

MEASURE M PROGRAMMING CAPACITY

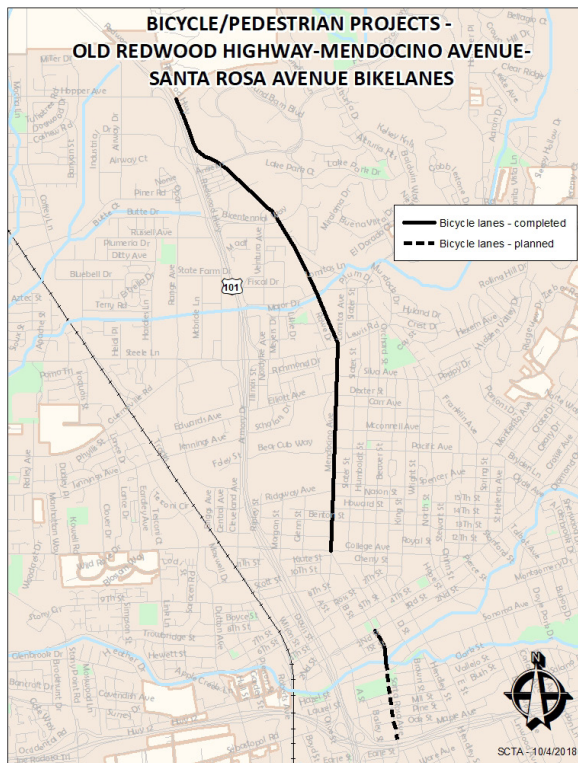
The City of Santa Rosa has programmed \$157K of the \$500K of Measure M – BP funds identified in the Measure M Expenditure Plan (\$343K remaining).

STAKEHOLDERS

City of Santa Rosa

Funding (in thousands):

PHASE	TOTAL	MEASURE M – BP	OTHER*	NEED
1	\$157	\$84	\$0	\$0
2	TBD	\$0	\$0	TBD
TOTALS	TBD	\$157	\$0	TBD



CLICK THE MAP ABOVE TO VIEW A LARGER VERSION.



PROJECT DETAILS

The City of Santa Rosa plans to deliver this project in the following two phases:

Phase 1 – Mendocino Avenue from Fountaingrove Parkway to Steele Lane

The first phase of this project is located adjacent to Santa Rosa Junior College and modified median islands and restriped Mendocino Avenue to include bike lanes.

PROJECT STATUS/SCHEDULE

Phase 1 was completed in June 2009.

PHASE 2 – SANTA ROSA AVENUE FROM MAPLE STREET TO SONOMA AVENUE

The second phase is located between Maple Street and Sonoma Avenue on Santa Rosa Avenue.

PROJECT STATUS/SCHEDULE

The City of Santa Rosa is working on a funding plan and schedule for Phase 2 work.



SONOMA COUNTY TRANSPORTATION AUTHORITY
411 KING STREET SANTA ROSA, CA 95404
T. 707.565.5373 E. INFO@SCTA.CA.GOV