

# SONOMA SCHELLVILLE BIKE TRAIL

## PROJECT SPONSORS

Sonoma County Regional Parks



## PROJECT FACT SHEET

### EXPENDITURE PLAN DESCRIPTION

Class I path would connect Hwy 121 to City of Sonoma Class I path through town.

### MEASURE M PROGRAMMING CAPACITY

Sonoma County Regional Parks has programmed all the \$650K in Measure M – BP funds identified in the Measure M Expenditure Plan.

### STAKEHOLDERS

City of Santa Rosa

### Funding (in thousands):

PHASE	TOTAL	MEASURE M – BP	OTHER*	NEED
1	\$1,799	\$650	\$259	\$890
<b>TOTALS</b>	<b>\$1,799</b>	<b>\$650</b>	<b>\$259</b>	<b>\$890</b>

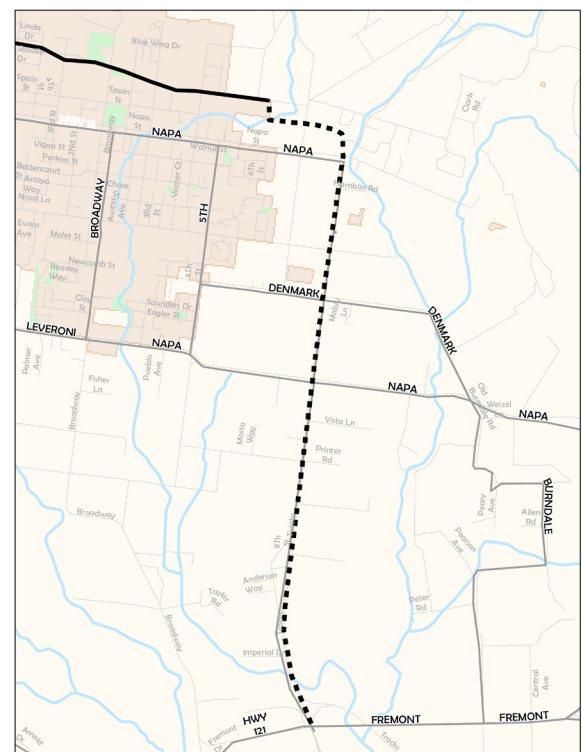
### PROJECT DETAILS

This project will develop a four mile, Class I bike path that follows the former Northwestern Pacific Railroad right-of-way, which partially parallels 8th Street East. The railroad right of way is located on the east side of 8th Street East. The proposed trail starts at the intersection of Highway 121 and ends at the city limits of Sonoma. The proposed trail will also serve as a link to the San Francisco Bay Trail, which is a high priority project for the Association of Bay Area Governments. The construction work will include asphalt paving, gravel shoulders, grading and drainage, striping, signage, and bollards.

### PROJECT STATUS/SCHEDULE

Sonoma County Regional Parks has secured three easements and one fee title to sections of the railroad right of way. However, the County still needs to acquire the remaining sections of properties from Union Pacific, private property owners, and SMART (Sonoma Marin Area Rail Transit). In 2014 Sonoma County Regional Parks acquired 0.32 acres of private property to be developed as a trailhead. The trailhead is located at the southwest corner of Napa Street and 8th Street East. The trailhead improvements include a 10-car parking lot with landscaping and irrigation, which was completed in February 2014. Sonoma County Regional Parks Department is working on developing a funding plan and schedule for Environmental, Design and Construction of the remaining improvements.

## BICYCLE/PEDESTRIAN PROJECTS SONOMA SCHELLVILLE TRAIL



CLICK THE MAP ABOVE TO VIEW A LARGER VERSION.



**SONOMA COUNTY TRANSPORTATION AUTHORITY**  
411 KING STREET SANTA ROSA, CA 95404  
T. 707.565.5373 E. INFO@SCTA.CA.GOV