

# AIRPORT BLVD. IMPROVEMENTS & AIRPORT BLVD. INTERCHANGE

## PROJECT SPONSORS

Sonoma County Transportation and Public Works  
Sonoma County Transportation Authority (Phase 4)

## PROJECT FACT SHEET

### EXPENDITURE PLAN DESCRIPTION

This project will signalize and widen Airport Boulevard from the Sonoma County Airport over Highway 101 to Old Redwood Highway. The project would also extend Brickway Boulevard from Laughlin Road to River Road as a congestion relief measure for the Airport Boulevard interchange.

### MEASURE M PROGRAMMING CAPACITY

All \$15 Million of Measure M – LSP identified in the Measure M Expenditure Plan has been programmed.

### STAKEHOLDERS:

Penngrove  
Cotati  
Rohnert Park  
Santa Rosa  
Petaluma

### PROJECT DETAILS

The County implemented a phased delivery schedule for the Airport Boulevard project as detailed below.

### PHASE 1 – WIDEN AIRPORT BOULEVARD TO FIVE LANES FROM THE SONOMA COUNTY AIRPORT (ORDINANCE ROAD) TO AVIATION BOULEVARD

#### PROJECT STATUS / SCHEDULE

Funding for preliminary engineering and environmental phases is identified in 2021/22. The construction schedule is to be determined, dependent on securing funding.

### PHASE 1A – WIDEN AIRPORT TO SEVEN LANES BETWEEN AVIATION BOULEVARD AND HIGHWAY 101, INCLUDING SIGNALIZING AVIATION BOULEVARD INTERSECTION

#### PROJECT STATUS/SCHEDULE

This project completed construction in 2008.

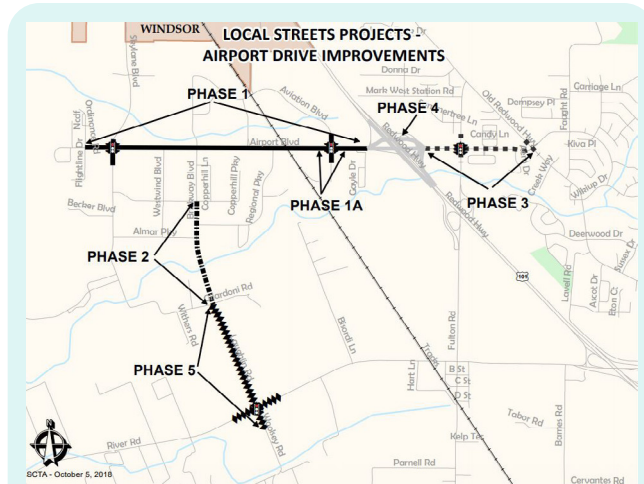
### PHASE 2 – EXTEND BRICKWAY BOULEVARD SOUTH, INCLUDING CONSTRUCTION OF A NEW BRIDGE OVER MARK WEST CREEK

#### PROJECT STATUS/SCHEDULE

Funding for preliminary engineering and environmental phases was identified in 2013 and design work was underway. Due to inadequate funding and federally ineligible expenditure this project is on hold indefinitely.

### Funding (in thousands):

Phase	Total	Measure M-LSP	Other*	Need
1	\$4,262	\$1,500	\$550	\$1,581
1A	\$996	\$496	\$500	\$0
2	\$15,545	\$2,131	\$0	\$14,045
3	\$2,115	\$650	\$1,465	\$0
4	\$53,933	\$8,959	\$45,974	\$0
4A	\$1,314	\$1,264	\$50	\$0
5	\$15,645	\$0	\$0	\$15,645
<b>Totals</b>	<b>\$93,810</b>	<b>\$15,000</b>	<b>\$47,538</b>	<b>\$31,271</b>



[CLICK THE MAP ABOVE TO VIEW A LARGER VERSION.](#)



SONOMA COUNTY TRANSPORTATION AUTHORITY

SONOMA COUNTY TRANSPORTATION AUTHORITY  
411 KING STREET SANTA ROSA, CA 95404  
T. 707.565.5373 E. INFO@SCTA.CA.GOV